

D. Review, Discuss, and Direct Staff.

Presentation of Used/New 15,500
pound Forklift pricing.



Explore more searches like wiggins forklift

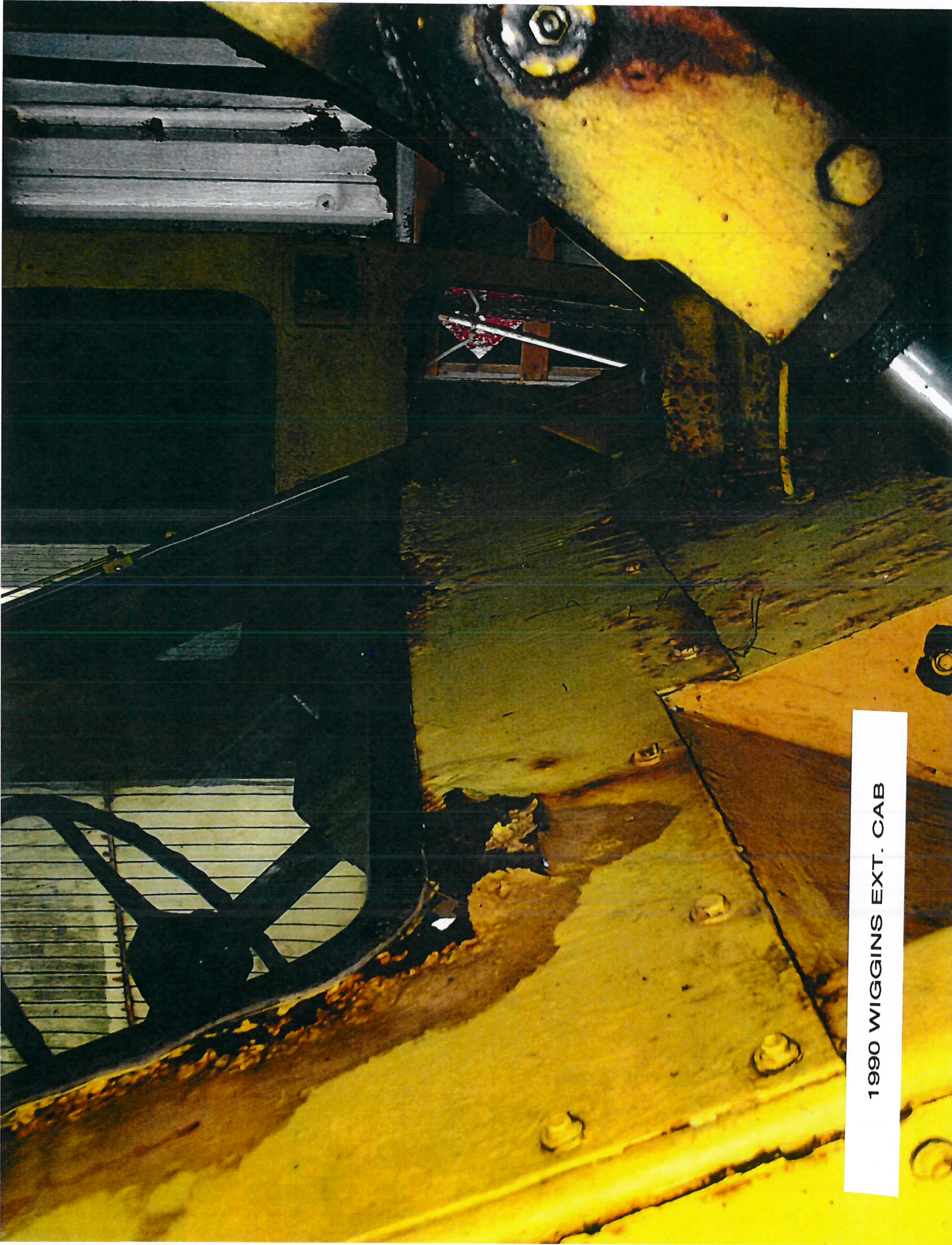




1990 WIGGINS EXT.



1990 WIGGINS CAB DOOR



1990 WIGGINS EXT. CAB



1990 WIGGINS CAB



Crescent City Harbor District

Phone (707) 464-6174 Fax (707) 465-3535
101 Citizens' Dock Road
Crescent City, California 95531
www.ccharbor.com

Lane Tavasci
Deputy Harbor Master

Forklift 15,000 lb. Capacity Quotes

Date: February 19, 2019

USED: 30 Day Power Train Warranty

<u>Make</u>	<u>Model</u>	<u>Fuel</u>	<u>Year</u>	<u>Hours</u>	<u>Quoted Price</u>	<u>Quoted Payment</u>
CAT	DP100	Diesel	2005	3,260	\$49,900.00	\$1247.50 – Buffalo –NY
Hyster	H155XL2	Diesel	2012	11,585	\$40,995.00	Est. \$999.00 –Otay Sales-SD,CA
Hyster	H155XL2	LP Gas	2000	6,204	\$39,900.00	Est. \$999.00 –Buffalo-NY

NEW: Lease to Own End of 60 Months-\$1.00 Buy Out

<u>Make</u>	<u>Model</u>	<u>Year</u>	<u>Quoted Price</u>	<u>Quoted Payment</u>	<u>Time Period</u>
Toyota	8FD70U	2018	\$72,305.00	\$1,379.79	60 months -Redding, CA
Hyster	H155FT	2019	\$95,458.66	\$1,851.27	60 months-Eureka, CA
Yale	GP155VX	2019	\$98,770.00	\$2,157.00	60 months-Eureka, CA

Caterpillar – Model DP100 22,000 # Capacity



Caterpillar – Model DP100

Year: 2005

Hours: 3,260

(Does not have enclosed CAB)

Quoted Price: \$49,900.00 Estimated monthly payments: \$1,247.50

Delivery: \$2,100.00 (Would ship from Buffalo, NY)

Total Cost: \$52,000.00



OTAY MESA SALES INC. EQUIPMENT SALES AND RENTALS

8530 AVENIDA COSTA NORTE OFFICE:619.671.1020
SAN DIEGO, CA 92154 FAX:619.671.0353

PRICE QUOTATION

DATE	QUOTE NO.
2/11/2019	8965

Bill To:
CC HARBOR DISTRICT 101 CITIZENS DOCK RD CRESCENT CITY, CA 95531

Ship To
CC HARBOR DISTRICT 101 CITIZENS DOCK RD CRESCENT CITY, CA 95531

TERMS	VALID UNTIL
	2/11/2019

ITEM	DESCRIPTION	AMOUNT
23809	HYSTER 15,500LB PNEUMATIC TIRE FORKLIFT. CUMMINS DIESEL, SIDE SHIFT. MODEL:H155FT SN:J006V04047J INCLUDES: DELIVERY, 30 DAY POWER TRAIN WARRANTY, 96" X 2.5" X 6" FORKS, STANDARD TAPERED Year: 2012 Hours: 11,585	40,995.00

HAVE A NICE DAY !

Sales Tax (0.0%) \$0.00

TOTAL \$40,995.00



TOYOTA
MATERIAL HANDLING
NORTHERN CALIFORNIA

Toyota Material Handling Northern California
 6999 Southfront Rd
 Livermore, CA 94551-8221
 Phone: 510-675-0500
 Fax: 510-675-0400
 www.tmhnc.com

To: Crescent City Harbor district
 101 Citizens Dock Rd
 Crescent City, CA 95531-4435
 Attn: Lane Tavaschi

Date: February 5, 2019
 Our Ref: 40772678
 Phone: 707-464-6174
 Fax:

We respectfully submit this quotation for the following NEW Toyota Diesel Powered Lift Truck (1 each):

Toyota...Proud to be the world's #1 forklift manufacturer!

TOYOTA MODEL 8FD70U, Diesel Lift Truck, quality engineered with the following specification:

- Pneumatic Tires
- Diesel Powered

SYSTEM OF ACTIVE STABILITY™ (SAS)

Toyota's industry exclusive System of Active Stability (SAS) helps reduce lift truck instability by electronically monitoring and controlling various functions of the lift truck.

- **Active Mast Function Controller (AMC):** Should the operator inadvertently place the lift truck in a potentially unstable longitudinal condition, these same sensors trigger the SAS controller to activate the AMC, which limits forward tilt and/or tilt back speed to help reduce the likelihood of a longitudinal tip over.

TOYOTA ENGINE

Engineered to the highest standards of quality, durability, and reliability, your Toyota lift truck is outfitted with the industry's most respected industrial engines.

2-SPEED AUTOMATIC (POWERSHIFT) TRANSMISSION

A standard 2-speed automatic transmission with 2 forward and 2 reverse gears provides superior torque, gradeability and acceleration to get the job done. Designed by Toyota engineers, this electronically controlled transmission passed 120 testing parameters to ensure it can meet the rigorous demands of your application. A standard 1st gear lock switch on the left-hand side of the steering column also allows the operator to lock the transmission in 1st gear when needed.

AUTOMATIC FORK LEVELING

Toyota's Automatic Fork Leveling feature increases productivity while reducing damage with a push of a button. By depressing the Automatic Fork Leveling button during forward tilt, operators are quickly and easily able to level the forks.

FULL FLOATING PLANETARY DRIVE AXLE

Your Toyota lift truck is outfitted with a rugged planetary drive axle. This planetary drive axle decreases the torsional stresses commonly experienced with power shifting, resulting in greater durability, reliability, which results in



Models 8FD70U Shown

Photo may portray optional equipment not included in your quotation.

increased uptime.

Mast 2-Stage (V) mast with limited free lift provides excellent visibility to load and fork tips, while providing smooth, quiet and consistent operation. Mast specifications:
Maximum Fork Height - **179.5"**
Overall Lowered Height - 130.3" (Overhead Guard Height - 90.90")
Free Lift - 4.9" with standard Load Backrest

Lifting Capacity **Base Model Capacity - 15,500 lbs. @ 24" load center**
Actual Capacity, based on quoted specifications, - 14,000 lbs. @24" load center to 179.5" MFH

Actual capacity ratings stated above are based on standard features, options, and attachments available through Toyota at the time of quoting. Non-standard features, options, and attachments may affect actual capacity ratings. Please contact your Toyota sales representative for additional information.

Tilt 6 degrees forward and 12 degrees backwards

Carriage Wide Carriage Class IV - 72"

Forks **Forks 72" x 6" x 2.6" Pin Type**

Load Backrest 54" High Load Backrest

Attachments **Rightline 72" Integral Pin Type Sideshifting Fork Positioner (Includes 4 Way Valve with 3rd & 4th Function Hosing)**

Speeds Travel Speed: 13 mph Lift Speed: 87 fpm

Engine Toyota 3.0L 1KD Industrial Diesel Engine
3.0 Liter, 4 Cylinder, Dual Overhead Cam (DOHC)
Net Torque Rating: 220 @ 1200-1500 rpm SAE ft-lb
Net Horsepower Rating: 74 @ 2200 rpm SAE HP
Common Rail Fuel Injection
Variable Nozzle Turbocharger with Air-cooled Intercooler
TIER IV final emissions system with Diesel Oxidation Catalyst (DOC) with Exhaust Gas Recirculation system

Transmission 2-Speed Automatic (Powershift) Transmission
2 speed forward, 2 speed reverse standard.

Steering Load Sensing Hydrostatic Power Steering with Tilt Steering Column

Wheels and Tires Front Tires: 8.25-15-14PR (Pneumatic, Dual Drive)
Rear Tires: 8.25-15-14PR (Pneumatic)

**Additional
 Equipment**

Adjustable Volume Back-up Alarm (Smart Alarm)
Full Steel Cabin with wipers, heater
Rear View Mirrors (Left & Right Sides)
Strobe Light - Yellow
LED Rear Combination Lights
LED Headlights
LED Reverse Activated Rear Work Light
Orange Seat Belt
Rear Assist Grip with Horn Button
Pencil / Tape Holder (Mounted on Overhead Guard Leg)
Fire Extinguisher (Mounted on rear Overhead Guard Leg)
Install Mast

**Other
 Outstanding
 Toyota Features**

- Operator Presence Sensing System (OPSS)
- Dual Action Hand Parking Brake
- Adjustable Headlights with Guards
- Electronic Shift Control
- Electronic Speed Control
- Fully Insulated Stamped Steel Engine Hood
- Low Entry Step Height
- Dual Operator Assist Grips
- Dash Integrated Pen/Pencil/Cup Holder
- Durable Rubber Floor Mat
- High Visibility Overhead Guard

Some standard items listed within this quotation may be replaced or altered due to optional equipment.

Warranty

12 Months or 2,000 hours whichever occurs first: Basic
 36 Months or 6,000 hours whichever occurs first: Powertrain

Warranty coverage for non-standard option components will be covered by the manufacturer of that component and not covered under the Toyota forklift standard or powertrain warranty.

We offer a Toyota factory authorized warranty on all new Toyota Industrial Equipment.

Investment

Price-Toyota Model 8FD70U as specified above:	\$72,305	Each
Net Price:	\$72,305	Each
	Plus tax	

Financing and Maintenance A broad range of competitive and flexible financing options are available through Toyota. Financing requires credit approval. Terms and conditions are subject to change.

In addition, Full Maintenance and Planned Maintenance programs are available.

1. **60-month Lease.** Total monthly payments of **\$1,393.79** plus applicable taxes. First payment is due in advance. An end of term purchase option of \$1.00 is available at contract signing.

Quantity: _____ Initial Selected Option _____

Terms and Conditions

Payment: COD or Financed
Delivery: Will advise at time of order

F.O.B.: Delivered

Prices are exclusive of any sales or use taxes now in force or which may be made effective in the future by any federal, state, or local governments.

Lease offerings subject to credit approval

Performance and specifications stated are based on specific testing and operating conditions.

Actual performance and specifications may vary based on application, option configuration, operating conditions, and environmental factors.

Some options and configurations may void UL.

Conditions subject to change to those in effect at time of delivery.

Your signature on this proposal constitutes an order.

This Quotation {Order} is subject to TMHNC's GENERAL TERMS AND CONDITIONS, Form GTC Pub 0001 03-9-2007 Rev B;

This quotation is valid for (30) days

California Users

When operated in California, any Off-road diesel vehicle may be subject to the California Air Resources Board In-Use Off-Road Diesel Vehicle Regulation. It therefore could be subject to retrofit or accelerated turnover requirements to reduce emissions of air pollutants. For more information, please visit the California Air Resources Board website at <http://www.arb.ca.gov/msprog/ordiesel/ordiesel.htm>.

Sincerely,
Toyota Material Handling Northern California

Accepted:
Crescent City Harbor district

Cash Price \$ _____

Financed Payment \$ _____ Per Month _____ Months

By: *WC Parks*

By: _____

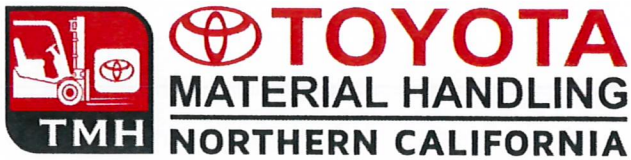
Name: Bill Parks

Name: _____

Title: Sales Representative

Title: _____

Date: _____



Toyota Material Handling Northern California
6999 Southfront Rd
Livermore, CA 94551-8221
Phone: 510-675-0500
Fax: 510-675-0400
www.tmhnc.com

February 5, 2019

Lane Tavasci
Crescent City Harbor district
101 Citizens Dock Rd
Crescent City, CA 95531-4435

Dear Lane:

We are pleased to submit the attached Toyota Diesel Powered Lift Truck quotation for your review and approval.

As an authorized Toyota dealer, Toyota Material Handling Northern California can provide the high-quality equipment and service you would expect from the world's leading forklift manufacturer. This quotation reflects our understanding of your forklift needs, combined with a careful configuration of the appropriate equipment and options.

To place your order, please sign and date the quotation where indicated and return to me. If you have any questions, please contact me.

Thank you for your interest in our company and our Toyota products. We look forward to being of valuable service to you for your material handling needs.

Sincerely,

Bill Parks
Sales Representative
Phone: 510-675-0500
Fax: 510-476-5988
E-mail: bparks@tmhnc.com

encl



MODEL: H155FT

All trucks shown with optional equipment. Please refer to quotation specifications.

CUSTOMER DETAILS

CUSTOMER	Crescent City Harbor District		
ADDRESS	101Citizens Dock Road, Crescent City, California, 95531		
SHIP-TO ADDRESS	101Citizens Dock Road, Crescent City, California, 95531		
CONTACT NAME	Mr. Lane Tavasci	Deputy Harbor Master	
PHONE	(707) 464-6174		

PROPOSED BY	Manny Hernandez	EMAIL	mhernandez@papemh.com
PHONE	(707) 443-3015	QUOTE EXPIRATION	Apr 10 2019
DATE	Feb 11, 20189		



Quoted Model: H155FT Available Features

Hyster® FORTIS H155FT pneumatic tire lift truck. Nominal 15,500 lb. capacity at a 24" load center. The Fortis® truck series represents Hyster's commitment to quality and dependability by incorporating proven design processes and systems to ensure the toughest, most durable lift trucks available. Fortis® models feature low operating costs, superior ergonomics, greater dependability, and exceptional productivity to satisfy the demands of heavy duty applications. Premium components such as IP66 sealed electrical connectors, Hall Effect sensors and switches and Leak-free O-ring face seal (ORFS) fittings are used throughout the Fortis® truck series to provide long term reliability. Standard Equipment includes: Integrated Dashboard Display, Operator Restraint System, Infinitely Adjustable Steering Column, Low Fuel Indicator, Duratread Floor mat and Operator Presence System (OPS).

Proposal Summary

Included Items	Description	Quantity
Model	Hyster® H155FT lift truck - 15,500 lb capacity, Class V	1
Powertrain	Brakes - Premium Oil-Cooled Wet Disc Brakes Kubota 3.8L Diesel (74hp/55kW) DOC Engine Electronically Controlled Powershift 2-Speed Transmission	
Powertrain Options	High Air Intake Overhead Exhaust Single Pedal Inch/Brake Arrangement Key Switch Start UL Label - Classification Type D	
Powertrain Accessories	System Monitoring	
Mast	Mast Tilt - 5° Forward / 10° Back 2 Stage Limited Free Lift Mast - Class IV - 212" (5400mm) Maximum Lift Height - 148" (3740mm) Overall Lowered Height - 6" (160mm) Free Lift Height without Load Backrest - 266" (6754mm) Overall Extended Height with Load Backrest	
Carriages & Attachments	78" (1981mm) Wide - Class IV - Hook Type Carriage with Hang-On Sideshifting Fork Positioner Carriage Side Thrust Rollers	
Forks	96" Long x 2.5" Thick x 6" Wide (2438mm x 60mm x 150mm) - Class IV Hook Type - Standard Taper Forks	
Hydraulics	4 Function (2 Auxiliary) Hydraulic Control Valve Mechanical Lever Hydraulic Controls - Cowl Mounted	
Hoses	2 Auxiliary Function Hose Group - 4 Hoses Internally Mounted	
Wheels & Tires	Drive Tires - 8.25 x 15-14 - Pneumatic - Dual Tread Width Steer Tires - 8.25 x 15 -14 - Pneumatic	
Operator Compartment	Fire Extinguisher - 2.5 lb. Dry Chemical Full Steel Cab Rear Drive Handle with Horn Button Mirrors - Dual Side View - Mounted on the Left and Right Side of Overhead Guard	
Directional Control	MONOTROL® Directional Control Pedal Steering Wheel with Integral Spinner Knob	



Seat	Seat Belt - Black - No-Cinch with ELR (Emergency Locking Retractor) Full-Suspension Vinyl Seat
Lights & Alarms	Audible Alarm - Reverse Direction Activated - Self-Adjusting 82-102 dB(A) Visible Alarm - Amber LED Strobe - Keyswitch Activated - Does Not Increase Truck Height Work Lights - LED Plastic Lens- 2 Front and 1 Rear - Rear Combination Lights - LED - 2 Brake / Tail / Back-up
Warranty	12 Months / 2,000 Hours Manufacturer's Warranty, 36 Months / 6,000 Hours Powertrain Warranty; please see full Warranty Statement for additional details.
Literature & Nameplate	English Literature Pack and Labels Parts Manual - Printed - Truck Serial Number Specific
Fees & Surcharges	Freight Fees & Surcharges Mast Removed for Shipping
Tariff	Tariff Surcharge

Total Investment

Price H155FT	\$95,458.66	Qty: 1	
Quoted Quantity	1	TOTAL:	\$95,458.66 Plus Tax

F.O.B. Delivered. Price is exclusive of any taxes. For Terms and Conditions see www.pape.com/terms

Proposal By:	<u>Manny Hernandez</u>	Accepted By:	_____
Signature:	<u><i>Manny Hernandez</i></u>	Signature:	_____
Date Signed:	<u>2-13-19</u>	Date Accepted:	_____
		PO Number:	_____

Is \$1851.27 a month for 60 months
Customer Pays Tax with Full payout at the end of the terms



PAPE MATERIAL HANDLING
2736 JACOBS AVE.
EUREKA California 95501
Phone: 707-443-3015



Terms and Conditions

F.O.B. Delivered. Price is exclusive of any taxes.
For Terms and Conditions see www.pape.com/terms



MODEL: GP155VX

All trucks shown with optional equipment. Please refer to quotation specifications.

CUSTOMER DETAILS

CUSTOMER	Crescent City Harbor District	
ADDRESS	101Citizens Dock Road, Crescent City, California, 95531	
SHIP-TO ADDRESS	101Citizens Dock Road, Crescent City, California, 95531	
CONTACT NAME	Mr. Lane Tavasci	Deputy Harbor Master
PHONE	(707) 464-6174	

PROPOSED BY	Manny Hernandez		
PHONE	(707) 443-3015	EMAIL	mhernandez@papemh.com
DATE	Feb13 2019	QUOTE EXPIRATION	March 13 2019

Quoted Model: GP155VX Available Features

Yale® VERACITOR® GP155VX pneumatic tire lift truck. Nominal 15,500 lb. capacity at a 24" load center. Veracitor trucks feature industrial-grade critical components that maximize productive value and economic life of the lift truck. Their rugged powertrains and cooling systems are designed specifically for tough applications. The isolated powertrain design reduces noise and vibration minimizing operator fatigue and increasing operator productivity throughout a shift. Highly reliable electrical systems provide sophisticated control of truck functionality leading to outstanding efficiency. The cowl-to-counterweight access and on-board diagnostics makes servicing fast, easy and convenient, making the Veracitor® VX series the standard in truck serviceability. Standard Equipment includes: Integrated Dashboard Display, Operator Restraint System, Operator Presence System (OPS), Low Fuel Indicator, Infinitely Adjustable Steering Column and Floor mat. The innovative Yale® Flex Performance Technology™ offers the flexibility to maximize fuel economy or productivity to match application needs. This feature provides operators the ability to achieve a balance of enhanced performance and superior fuel economy, or to maximize productivity during peak business periods when moving more loads is integral to the success of the operation.

Proposal Summary

Included Items	Description
Model	Yale® GP155VX lift truck - 15,500 lb capacity, Class V
Powertrain	Brakes - Premium Oil-Cooled Wet Disc Brakes Kubota 3.8L Diesel (74hp/55kW) DOC Engine
Powertrain Options	Electronically Controlled Powershift 2-Speed Transmission High Air Intake Overhead Exhaust Single Pedal Inch/Brake Arrangement Key Switch Start UL Label - Classification Type D
Powertrain Accessories	System Monitoring
Mast	Mast Tilt - 5° Forward / 10° Back 2 Stage Limited Free Lift Mast - Class IV - 212" (5400mm) Maximum Lift Height - 148" (3740mm) Overall Lowered Height - 6" (160mm) Free Lift Height without Load Backrest - 266" (6754mm) Overall Extended Height with Load Backrest
Carriages & Attachments	78" (1981mm) Wide - Class IV - Hook Type Carriage with Hang-On Sideshifting Fork Positioner Carriage Side Thrust Rollers
Forks	96" Long x 2.5" Thick x 6" Wide (2438mm x 60mm x 150mm) - Class IV Hook Type - Standard Taper Forks
Hydraulics	4 Function (2 Auxiliary) Hydraulic Control Valve Mechanical Lever Hydraulic Controls - Cowl Mounted
Hoses	2 Auxiliary Function Hose Group - 4 Hoses Internally Mounted
Wheels & Tires	Drive Tires - 8.25 x 15 - Pneumatic Shaped Solid (PSS) - Dual Tread Width Steer Tires - 8.25 x 15 - Pneumatic Shaped Solid
Operator Compartment	Full Steel Cab
Directional Control	Foot Directional Control (FDC) Steering Wheel with Integral Spinner Knob
Seat	Seat Belt - Black - No-Cinch with ELR (Emergency Locking Retractor) Non-Suspension Vinyl Seat
Lights & Alarms	Audible Alarm - Reverse Direction Activated - Self-Adjusting 82-102 dB(A) Visible Alarm - Amber LED Strobe - Keyswitch Activated - Does Not Increase Truck Height

Warranty	Work Lights - LED Plastic Lens- 2 Front and 1 Rear - Rear Combination Lights - LED - 2 Brake / Tail / Back-up 12 Months / 2,000 Hours Manufacturer's Warranty, 36 Months / 6,000 Hours Powertrain Warranty; please see full Warranty Statement for additional details.
Literature & Nameplate	English Literature Pack and Labels Parts Manual - Printed - Truck Serial Number Specific
Fees & Surcharges	Freight Fees & Surcharges Mast Removed for Shipping

Total Investment

Price GP155VX	\$98,770.00 Plus Tax
Quoted Quantity	1

No Down Payment in Advance, 60 months @ \$ 2,157.00 per month

Proposal By:	<u>Manny Hernandez</u>	Accepted By:	_____
Signature:	<u><i>Manny Hernandez</i></u>	Signature:	_____
Date Signed:	<u>2-13-19</u>	Date Accepted:	_____
		PO Number:	_____

Optional Items: GP155VX Available Features

	Description	Quantity	Ext Price	Initial to Add
Seat	Seat Belt - High-Visibility (Red) - No-Cinch with ELR (Emergency Locking Retractor)	1	\$73.60	_____
	Full-Suspension Vinyl Seat	1	\$368.00	_____
Operator Compartment	Fire Extinguisher - 2.5 lb. Dry Chemical	1	\$174.80	_____
	Mirrors - Dual Side View - Mounted on the Left and Right Side of Overhead Guard	1	\$128.80	_____



Evan Simmons evans@otaysales.com

619-671-1020

HYSTER 15500LB H155FT DIESEL PNEUMATIC FORKLIFT

\$39,995

- **Year:** 2010 - 2014
- **Stock:** 23809
- **Make:** Hyster
- **Model:** H155FT
- **Capacity:** 15500 lbs

CATERPILLAR 15000LB DP70 DIESEL PNEUMATIC FORKLIFT

\$38,995

- **Year:** 2014 - 2018
- **Stock:** 22651
- **Make:** Caterpillar
- **Model:** DP70
- **Capacity:** 15000 lbs

YALE 15,500LB GDP155 DIESEL PNEUMATIC TIRE FORKLIFT

\$99,995

- **Year:** 2011 - 2015
- **Stock:** 17518
- **Make:** Yale
- **Model:** GDP155VXNCJE102
- **Capacity:** 15500 lbs

YALE 15,500LB GDP155 DIESEL PNEUMATIC TIRE FORKLIFT

\$69,995

- **Year:** 2006 - 2010
- **Stock:** 14829
- **Make:** Yale
- **Model:** GDP155VXNCDE102
- **Capacity:** 15500 lbs



Call Us 7 Days a Week!
716-568-4135

Email Us Today!
sales@buffaloforklift.com

Search all products...



HOME

TESTIMONIALS

FORKLIFTS

BOOM LIFTS

SCISSOR LIFTS

TELEHANDLERS

NEW LIFTS

MORE 

4624 Goodrich Rd
Clarence, NY 14031

Home > Forklifts > 2005 CATERPILLAR DP100 22000 LB DI...

Lane Tavasci

From: Joe Schaus <joes@buffaloforklift.com>
Sent: Monday, February 11, 2019 11:27 AM
To: Lane Tavasci
Subject: Forklift options

New option

[BRAND NEW 2018 HANGCHA XF-70 15500 LB FORKLIFT DIESEL PNEUMATIC 98/174 3 STAGE MAST SIDE SHIFTER STOCK # BF9386169-499-BUF \\$54,900.00 \\$54,900.00 Save \\$5,000](#)

Refurbished Option L/P

[2000 HYSTER H155XL2 15500 LB LP GAS FORKLIFT PNEUMATIC 110/220 3 STAGE MAST SIDE SHIFTER 6204 HOURS STOCK # BF92459-399-PRLT \\$39,900.00 \\$39,900.00 Save \\$5,000](#)

Refurbished Option Diesel

[2005 CATERPILLAR DP100 22000 LB DIESEL FORKLIFT PNEUMATIC 153/177" 2 STAGE MAST SIDE SHIFTING FORK POSITIONER 96" FORKS STOCK #BF936919-PENY \\$49,900.00 \\$49,900.00 Save \\$5,000](#)

Keep in mind all our lifts are reconditioned. All units go through a detailed 130 point check, anything that doesn't work or is broken gets fixed or replaced. Then if necessary the lift gets fresh paint from the bare metal all the way up, new decals and then before it ships out to you the lift get another inspection from our mechanics to ensure there are no issues when you receive it.

CALL - EMAIL - TEXT Which ever is quicker and easier for you.

Thanks,

Buffalo Forklift LLC
Joe Schaus
716-602-9023 direct cell/text
716-568-4135 office
joes@buffaloforklift.com
www.BuffaloForklift.com

On Feb 11, 2019, at 1:28 PM, Lane Tavasci <ltavasci@ccharbor.com> wrote:

Thank you for contacting me!

Best regards,

Lane Tavasci
Deputy Harbor Master

C.C.Harbor District
101 Citizens Dock Road
Crescent City, CA 95531
O (707) 464-6174 x 6
M (707) 951-6536

